

2023

TIGER  
LINK

# GATE HINGE CATALOGUE



GATE AND FENCING HARDWARE





# Gate Hinges

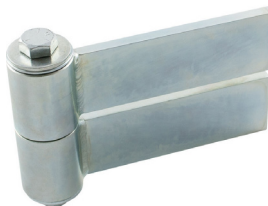


Find a variety of strong and dependable gate hinges that are built to operate your gates with ease and security. Our selection of gate hinges provides the essential support and stability to ensure perfect alignment and movement whether you have a swinging gate or a sliding gate.

To survive the rigours of daily use and outdoor environments, our gate hinges are painstakingly engineered and made using premium materials, such as stainless steel or heavy-duty steel. You can choose the ideal gate hinge to match the size, weight, and design of your particular gate thanks to the alternatives available for both residential and commercial uses. To meet varied installation needs and gate styles, we provide a variety of gate hinge kinds. Our offering accommodates a variety of aesthetic preferences, from butt hinges for a more streamlined appearance to strap hinges for a traditional and ornate appearance. Additionally, we offer adjustable hinges for your gate, ensuring effortless swinging or sliding. These hinges allow for accurate alignment and smooth operation.

## Rising Hinges

Rising Hinges or Up Hill Hinges  
Heavy Duty Strap Hinges BadAss



Part No.	Holds Weight Up To
----------	--------------------

HGHR400 680kg

Swing Gate Rising Hinge or Up Hill Hinge



Part No.	Holds Weight Up To
----------	--------------------

HN485 120kg Left Handed Type A  
HN490 120kg Right Handed Type A  
HN493 120kg Left Handed Type B  
HN497 120kg Right Handed Type B

Heavy Duty Rising hinges or Up Hill Hinges for Swing Gates- Both (LH & RH)



Part No.	Holds Weight Up To
----------	--------------------

HN491 120kg Left Handed Type A  
HN495 120kg Left Handed Type B

## Self Closing Hinges

Heavy Duty Weld On Steel Self Closing Hinge



Part No.	Holds Gates Up To
----------	-------------------

HGHC880 120kg

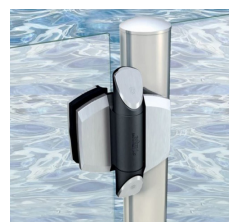
Tru Close Self Closing Hinge Wood



Part No.	Holds Gates Up To
----------	-------------------

HGHC748 30kg  
HN747 30kg no leg  
HN768 70kg 2 legs  
HN770 70k 1 leg

TruClose Self Closing Hinge for Round post to Glass



Part No.	Holds Gates Up To
----------	-------------------

HGHC772 25kg

### TruClose Mini-Multi Adjust Self Closing Gate Hinge For Square Post



Part No.	Holds Gates Up To
HN706	25kg

### Self Closing Gate Hinges for 40x40 Tube Gates



Part No.	Holds Gates Up To
HGHC924	75kg

### Swing Gate Self Closing Gate Hinge



Part No.	Holds Gates Up To
HN708	85kg no leg
HN709	85kg 2 legs

### Self-Closing BadAss Hinge Set



Part No.	Holds Gates Up To
HN481	130kg

### Heavy Duty Safetech Self Closing Gate Hinge



Part No.	Holds Gates Up To
HN710	85kg

### TruClose Self Closing Gate Hinge Regular Hinges for Round Post



Part No.	Holds Gates Up To
HN705	70kg

TIGERLINK

Tru Close Self Closing Gate Hinge  
Chrome Trim



Part No.	Holds Gates Up To
----------	-------------------

- HN752 70kg no legs
- HN760 70kg 2 legs

Self Closing Gate Hinge



Part No.	Holds Gates Up To
----------	-------------------

- HN720 45kg no alignment legs
- HN721 45kg with alignment legs

Tru Close Self Closing Gate Hinge  
Brushed Trim



Part No.	Holds Gates Up To
----------	-------------------

- HN754 70kg no legs
- HN762 70kg 2 legs

Swing Gate Hinges KwikFit non  
spring Hinge - Pair



Part No.	Holds Gates Up To
----------	-------------------

- HN725 25kg

TruClose Self Closing Gate Hinge -  
Heavy Duty



Part No.	Holds Gates Up To
----------	-------------------

- HN764 70kg no leg
- HN766 70kg 2 legs

Swing Gate Hinges KwikFit Self  
Closing Fixed Tension Hinge Pair



Part No.	Holds Gates Up To
----------	-------------------

- HN726 25kg

### Heavy Duty Self Closing Hinge for Round Post



Part No.	Holds Gates Up To
HN733	60kg

### Steel Self closing Light Gate Hinge 25,30,38x25mm



Part No.	Holds Gates Up To
HN796	450g

### Tru Close Swing Gate Self Closing Gate Hinge



Part No.	Holds Gates Up To
HN738	30kg no leg
HN744	30kg 2 legs
HN750	70kg no leg Black Trim
HN756	70kg 1 leg Black Trim
HN758	70kg 2 legs Black Trim

### Gates Steel Spring Self Closing Gate Hinge



Part No.	Holds Gates Up To
HN814	20NB
HN815	25NB
HN818	32NB

### TruClose Self Closing Gate Hinge - for Swing Gates both Metal/Wood



Part No.	Holds Gates Up To
HN745	30kg no leg
HN746	30kg 2 legs

### Kwikfit Aluminium Hinges Wall to Gate Self Closing Gate Hinge Pair



Part No.	Holds Gates Up To
HN820	20kg

# TIGERLINK

## Kwikfit Aluminium Self Closing Gate Hinge Pair



Part No.	Holds Gates Up To
HN822	20kg no legs
HN824	20kg 2 legs

## Heavy Duty Screw on Self Closing Hinge / Pair



Part No.	Holds Gates Up To
HN884	120kg Left Handed
HN886	120kg Right Handed

## Weld on Steel self closing Hinge



Part No.	Holds Gates Up To
HN870	20kg
HN875	60kg

## Self Closing Stainless Steel Interleaf Hinge Single Action



Part No.	Holds Gates Up To
HN890	2 Hinges - 40 Kgs 3 Hinges - 60 Kgs

## Weld on Self Closing Hinge with Push Plate Single Hinge



Part No.	Holds Gates Up To
HN882	80kg

## Single Self Closing Hinge - Stainless Steel - 316 Marine Grade



Part No.	Holds Gates Up To
HN900	60kg



Caracal Hydraulic 180 gate closer and spring hinge - Locinox



Part No.	Holds Gates Up To
HN009	1.1m

Safety Cap for D&D Heavy duty Self Closing hinge 70kg To Suit TCH Gate



Part No.
CP840

316 Marine Grade Stainless Steel Self-Closing Hinge - Double Action



Part No.	Holds Gates Up To
HN908	95kg

Safety Cap for D&D Regular Self Closing hinge 30kg To Suit TCA Gate



Part No.
CP842

Aluminium Self Closing Hinges



Part No.	Holds Gates Up To
HN920	40kg

Safety Cap for safetech Regular Self closing hinge



Part No.
CP838

Stainless Steel 180 Degree Weld on Hinges for Bi folder



Part No.	Holds Gates Up To
HN924	60kg

Safety Cap for safetech Heavy duty Self closing hinge



Part No.
CP839

## Weld On Hinges

### Weld On Shackle Hinges - Pair



Part No.	Holds Weight Up To
----------	--------------------

HGSK250	600kg
HGSK252	800kg
HGSK254	1200kg

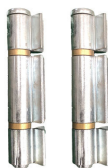
### Steel Weld On Hinge With Brass Washer



Part No.	Size
----------	------

HN179	80mm
HGHW180	100mm
HGHW182	120mm
HGHW184	150mm

### Heavy Duty Weld On Shackle Hinge - Pair



Part No.	Holds Weight Up To
----------	--------------------

HN255	800kg
-------	-------

### Stainless Steel Weld On Hinge



Part No.	Size
----------	------

HGHW178	80mm - Stainless Steel Washer
HGHW186	100mm - Brass Washer
HGHW188	120mm - Brass Washer

### Aluminium Weld On Hinge



Part No.	Size
----------	------

HGHW183	120mm
---------	-------

### Stainless Steel Weld On Hinge with Grease Nipple



Part No.	Size
----------	------

HGHW190	80mm
HGHW192	100mm
HGHW193	120mm

### Repair Kit for Weld On Self Closing Hinge



Part No.	For Part #
HN881	HGHC880
HN883	HN882

### Short Heavy Duty Strap Hinge 140x50mm Left Hand



Part No.	Size
HN870	20kg
HN875	60kg

### Weld On Self Closing Hinge with Push Plate



Part No.	Size
HN882	80kg

## Stock Yard Hinges

### Double Cattle Yard Hinges



Part No.	Size
HN092	20x20NB
HN094	25x25NB
HN095	32x20NB
HN095	32x32NB

### Cattle Yard Hinges with Attachment



Part No.	Size
HN088	50x25NB
HN090	80x32NB

## Strap Hinges

Heavy Duty Weld On Strap Hinges  
152mm BadAss



Part No.	Holds Weight Up To
HN486	680kg

Heavy Duty Strap Hinge Left and  
Right Side Pair



Part No.	Holds Weight Up To
HN602	600kg

Short Heavy Duty Strap Hinge  
140x50mm



Part No.	Holds Weight Up To
HN602	120kg Left Handed
HN604	120kg Right Handed

Locinox Stainless Steel Strap Hinge  
300mm 2 Hinges



Part No.	Holds Weight Up To
HN604	150kg

Strap Hinge 300x65mm Left Hand  
Pair



Part No.	Holds Weight Up To
HN486	200kg Left Handed
HN614	200kg Right Handed

## Adjustable Hinges

Swing Gate Adjustable Hinge 20mm Pin - 65mm Long Neck - Pair



Part No.	Holds Weight Up To
HGHA112	Hot Dip Galvanised 250kg
HGHA116	Galvanised 250kg

Swing Gate Adjustable Hinge with Rotating Pin



Part No.	Size
HGHA290	20mm pin - 150kg
HGHA292	24mm pin - 250kg

Short Heavy Duty Strap Hinge 140x50mm Right Hand



Part No.	Size
HGHA294	20mm pin - Rotating Thread Length 50mm
HGHA296	24mm pin - Rotating Thread Length 70mm

Locinox Puma - Compact 2 Way Adjustable 180° Surface Mounted Hinge



Part No.	Holds Weight Up To
HN016	60kg

Locinox Raptor - Compact 2 Way Adjustable 180° Surface Mounted Hinge - Silver



Part No.	Size
HN017	200kg

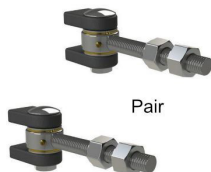
Locinox Raptor - Compact 2 Way Adjustable 180° Surface Mounted Hinge - Black



Part No.	Size
HN018	200kg

TIGERLINK

Heavy Duty Adjustable Super Hinge



Part No.	Holds Weight Up To
HN256	300kg/pair
HN257	450kg/pair
HN258	800kg/pair

Adjustable Swing Gate Hinge long neck 180° weld-on 4D



Part No.	Size
HN020	12mm pin
HN022	16mm pin
HN024	20mm pin

Adjustable Swing Gate Hinge with Fixing Plate



Part No.	Size
HN280	20mm neck 100x100 plate Hold up to 150kg
HN282	24mm neck 120x120 plate Hold up to 250kg

Hot Dip Galvanised Adjustable Swing Gate Hinge 110mm long neck 180° Bolt-on 4D



Part No.	Size
HN025	12mm pin
HN026	16mm pin

Hot Dipped Galvanized Adjustable Hinge long neck with Fixing Plate



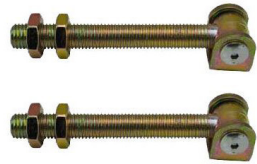
Part No.	Size
HN286	20mm neck up to 150kg

Adjustable Hinge Screw / Screw with long Neck



Part No.	Size
HN043	18mm pin

### Adjustable Swing Gate Hinge long neck Galvanised Pair



Part No.	Size/Holds Weight Up To
----------	-------------------------

- HN040 150 x 20mm pin/
- HN044 140 x 20mm pin/120kg
- HN046 160 x 24mm pin/225kg

### Galvanised Light Gate Hinge Adjustable



Part No.	Size/Holds Weight Up To
----------	-------------------------

- HN464 160mm x 16mm rod/100kg

### Heavy duty Adjustable weld on Swing gate Hinge 20mm pin - Pair



Part No.	Size/Holds Weight Up To
----------	-------------------------

- HN292 20mm pin/150kg

### Gudgeon & Trunnion Hinge Adjustable Pair



Part No.	Size/Holds Weight Up To
----------	-------------------------

- HN470 90mm x 16mm rod/120kg
- HN472 120mm x 16mm rod/120kg
- HN474 150mm x 16mm rod/120kg

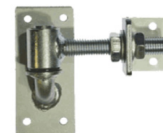
### Stainless steel Light Gate Hinge Adjustable



Part No.	Size/Holds Weight Up To
----------	-------------------------

- HN286 150mm x 12mm rod/70kg

### Swing gate Adjustable hinge - Pair



Part No.	Size/Holds Weight Up To
----------	-------------------------

- HN043 90mm x 16mm rod/120kg

TIGERLINK

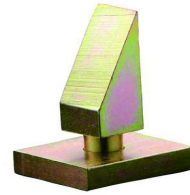
Round Adjustable weld on Swing gate Hinge 20mm pin Round plate



Part No.	Holds Weight Up To
----------	--------------------

HN570                      ????

Swing gate Upright Hinge with Plate

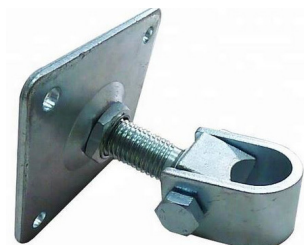


Part No.	Size/Holds Weight Up To
----------	-------------------------

HN578                      20mm pin/120kg

HN579                      24mm pin/180kg

Round Adjustable weld on Swing gate Hinge 20mm pin with Square plate



Part No.	Holds Weight Up To
----------	--------------------

HN574                      ????

Locinox 3 way adjustable hinge - Pair



Part No.	Holds Weight Up To
----------	--------------------

HN646                      150kg (stainless steel)

HN648                      150kg (hot dip)

Upright Swing gate Joint Hinge - Each



Part No.	Holds Weight Up To
----------	--------------------

HN576                      180kg

Hot Dip Galvanised Swing Gate Hinges with Aluminium plug for Light Gate



Part No.	Size/Holds Weight Up To
----------	-------------------------

HN776                      40x40mm / 80kg

HN778                      50x50mm / 80kg



## Bearing Hinges

Knock in Bearing Hinge for steel tube w/ 2 Hinges



Part No.	Size/Holds Weight Up To
HGBH350	40x40mm / 350kg
HGBH354	50x50mm / 350kg
HGBH360	65x65mm / 350kg
HGBH364	75x75mm / 350kg

Knock in Hinge for Aluminium Tube - Pair



Part No.	Holds Weight Up To
HGBH351	40x40mm / 350kg
HGBH352	50x50mm / 350kg

Locinox Swing Gate Hinge 180° Double bearing hinge - DINO - Black / Each



Part No.	Holds Weight Up To
HN010	150kg

Locinox Swing Gate Hinge 180° Double bearing hinge - DINO - Silver / Each



Part No.	Holds Weight Up To
HN012	150kg

Race Bearing Weld on Hinge for gate (Top+Bottom)



Part No.	Holds Weight Up To
HN400	350kg
HN404	600kg

Bolt on Race Bearing hinges to suit (Top+Bottom)



Part No.	Size
HN401	350kg
HN402	600kg

TIGERLINK

Steel BadAss Hinge - Zinc Finish



Part No.	Holds Weight Up To
----------	--------------------

HN475	500kg
HN476	680kg

Stainless Steel BadAss Hinge - Zinc Finish



Part No.	Holds Weight Up To
----------	--------------------

HN489	500kg
-------	-------

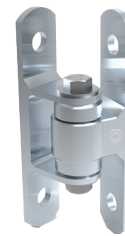
Combo BadAss Hinge Steel Body - Round or plate post installations



Part No.	Holds Weight Up To
----------	--------------------

HN479	270kg
-------	-------

Steel BadAss Bolt-On Hinge



Part No.	Holds Weight Up To
----------	--------------------

HN477	450kg
-------	-------

BadAss Hinge Aluminium Body for flat installation



Part No.	Holds Weight Up To
----------	--------------------

HN483	270kg
-------	-------

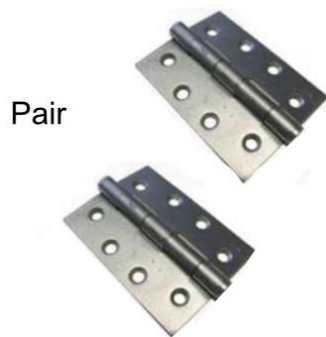
## Butterfly Hinges

Pair - Steel Butt Hinges- Zinc Finished



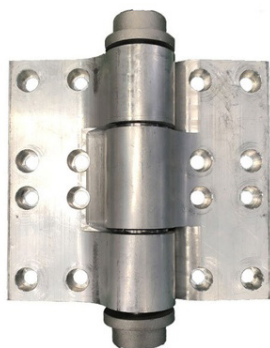
Part No.	Size
HN120	100x75x2.5mm
HN125	100x100x2.5mm

Butt Hinges Stainless steel Fixed Pin  
2 Hinges



Part No.	Size
HN130	100x75x2.5mm

Heavy Duty Aluminium Gate Hinges



Part No.	Size
HN010	165x150mm

## Light Gate Hinges

Locinox Self Closing Gate Hinges for Tube Gates



Part No.	Size/Holds Weight Up To
----------	-------------------------

HN120 130mm / 75kg

HN125 150mm / 75kg

Light Swing Gate Hinges



Part No.	Size/Holds Weight Up To
----------	-------------------------

HN795 50x50mm/1.5kg

Light Swing Gate Hinges



Part No.	Size/Holds Weight Up To
----------	-------------------------

HN784 25x25mm/445g

HN790 38x25mm/450g

HN792 30x30mm/450g

Steel Self closing Light Gate Hinge For Swing Gate Size Tube 25,30,38x25mm



Part No.	Size/Holds Weight Up To
----------	-------------------------

HN796 25,30,38x25mm/450g

Light Swing Gate Hinges



Part No.	Size/Holds Weight Up To
----------	-------------------------

HN793 40x40mm/830g

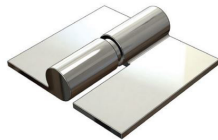
## Prison Hinges

### Swing Gate Weld to Weld Hinge



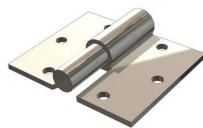
Part No.	Size/Holds Weight Up To
HGHW195	16mm/100kg Left Handed
HGHW200	16mm/100kg Right Handed

### Heavy Duty Industrial Weld to Weld Prison Hinge



Part No.	Size/Holds Weight Up To
HGHW198	19mm/260kg
HGHW199	19mm/260kg

### Swing Gate Screw to Screw Hinge



Part No.	Size/Holds Weight Up To
HGSS225	16mm/100kg Left Handed
HGSS230	16mm/100kg Right Handed

### Swing gate Steel Zinc Weld to Screw Hinge



Part No.	Size/Holds Weight Up To
HGWS202	19mm/120kg Left Handed
HGWS203	19mm/120kg Right Handed

### Heavy Duty Swing gate Weld to Screw hinge - Zinc Plated



Part No.	Size/Holds Weight Up To
HGWS205	25mm/800kg Left Handed
HGWS206	25mm/800kg Right Handed

### Swing Gate Weld to Screw Hinge - Zinc Plated



Part No.	Size/Holds Weight Up To
HGWS210	16mm/100kg Left Handed
HGWS215	16mm/100kg Right Handed
HGWS240	19mm/120kg Left Handed
HGWS245	19mm/120kg Right Handed

## TIGERLINK

### Swing Gate Screw to Screw Hinge Pair - Zinc Plated



Part No.	Size/Holds Weight Up To
----------	-------------------------

HN260	19mm Left Handed/100kg
-------	------------------------

HN262	19mm Right Hand- ed/100kg
-------	------------------------------

### Heavy Duty Swing Gate Screw to Screw Hinge Pair - Zinc Plated



Part No.	Size/Holds Weight Up To
----------	-------------------------

HN264	25mm Left Handed/220kg
-------	------------------------

HN266	25mm Right Hand- ed/220kg
-------	------------------------------

## Shackle Hinges

### Swing Gate hinges Shackle Weld on Hinges Pair



Part No.	Size/Holds Gates Up To
----------	------------------------

HGSK250	20mm/600kg
---------	------------

HGSK249	16mm/600kg
---------	------------

HGSK252	20mm/800kg
---------	------------

HGSK254	27mm/1200kg
---------	-------------

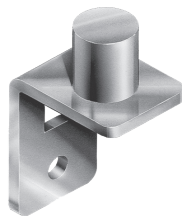
## Round Post Hinges

### Chain fencing 2 Part Hinge



Part No.	Size
HGHM054	50x25NB
HGHM056	50x32NB
HGHM058	65x25NB
HGHM060	65x32NB
HGHM066	80x40NB
HN050	40x25NB
HN052	40x32NB
HN062	80x25NB
HN064	80x32NB
HN068	100x25NB
HN070	100x32NB
HN072	100x40NB

### Swing gate Gudgeon Hinge



Part No.	Size
HN112	20mm diameter
HN114	25mm diameter
HN116	27mm diameter
HN118	32mm diameter

### Adjustable pin for Bottom Round Gate Hinge



Part No.	Size
HN028	25NB
HN030	32NB

### Swing gate Hot Dip Galvanised Hinge Strap Loose Fit- A Strap Only



Part No.	Size
HN140	20NB
HN142	25NB LD
HN144	25NB HD
HN146	32NB
HN148	40NB

### Swing gate Hot Dip Galvanised Hinge Strap Tight Fit- A Strap Only



Part No.	Size
HN150	20NB
HN152	25NB
HN154	32NB
HN156	40NB
HN158	50NB

TIGERLINK

Hot Dip Galvanised Strap Hinge Attachment - A Cover Only



Part No.	Size
HN160	20NB
HN162	25NB
HN164	25NB HD
HN166	32NB HD

Round to Square Post & Gate BadAss Bolt On Hinges



Part No.	Size
HN160	100mm
HN162	150mm
HN164	200mm

Hot Dip Galvanised Back Plate



Part No.	Size
HN140	86x25x3mm
HN142	98x25x5mm
HN144	116x40x5mm
HN146	125x40x5mm

TruClose Self Closing Gate Hinge Regular Hinges for Round Post



Part No.	Holds Gates Up To
HN705	70kg

Nylon Bush for Round Hinge



Part No.	Size
HN150	20NB
HN152	25NB
HN154	42.4NB

Gates Steel Spring Self Closing Gate Hinge



Part No.	Size
HN814	20NB
HN815	25NB
HN818	32NB



TIGER

LINK

### Tigerlink Preston

#### Address

22-24 Beecher St, Preston VIC 3072

#### Opening Hours

Monday to Friday - 8am to 5pm

Saturday - 8am to 12pm

Sunday - Closed

### Tigerlink Keysborough

#### Address

103 Indian Dr, Keysborough VIC 3173

#### Opening Hours

Monday to Friday - 7am to 4.30pm

Saturday - 8am to 12pm

Sunday - Closed